



# WMS Hillcrest Newsletter

## Easter Egg Hunt

Thursday, April 2, 2026  
@ 2:30 PM

This event is a family-friendly! Egg hunts will be on the playground designated per class! Parents will help their child Egg hunt. Once the hunt ends, we will serve doughnuts, fruit, and punch in the lobby to enjoy in class with your student! We can't wait to celebrate with everyone!



### Inside this issue:

Easter Egg Hunt	1
Closure Dates	1
Infants	2
Toddlers	2
Preschool	3
Important Reminders	3

### Special points of interest:

- Easter Egg Hunt— April 2, 2026
- CLOSED— April 3, 2026
- CLOSED— April 6, 2026

## Holiday Closures

<b>CLOSED—</b> April 3rd, 2026 Good Friday	<b>CLOSED—</b> April 6th, 2026 Easter Monday
--	--

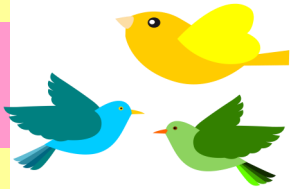


LaKeisha McCall,  
Head of School  
lmccall@weinackersmontessori.com

Terrie Long, Assistant Director

227 Hillcrest Rd. Mobile, AL. 36608

(251)344-8755



## Infants

Spring is here! Finally, warm weather to enjoy. Please be sure we have appropriate clothes in cubbies at school. This month we will be learning about eggs, birds, their nests, and rhyming words. Our sense this month is hearing. We look forward to a great Spring!



## Toddlers

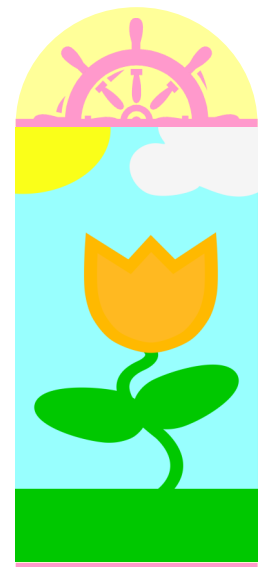
Spring is in the air! This month we will begin our study on birds, nests, and eggs. Many of our activities will be teaching how birds are alike and how they differ, where they live, and what they eat. And we hope to have beautiful weather to go outside and bird watch. We will also be learning about rhyming words and the sense of hearing.



## Preschool



We have so much to do before the end of the year. We will be starting off lessons this month with our discussion of poetry! We'll then move on to birds and their habitats. We will learn why and how they fly and what makes them different from us. We will then explore the content of Asia. We will learn about who lives there, where it is located on the map, and what kind of animals live there.



### Important Reminders:

- Early registration forms are due April 1st, 2026
- Please make sure your child has season appropriate spare clothes in their cubby
- Diapering fee for Preschool will be added to April tuition
- Drop-off is no later than 8:30 am. Please make sure to have your student at school on time! If your student is late, please drop off in the front office with Ms. Keisha or Ms. Terrie. We will walk them to class.